



**An Extractive Industries Centre For  
Excellence:  
A Proposal for Establishment**



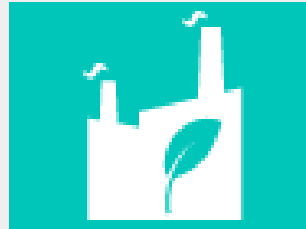
The **PROBLEM**



# THE PROBLEM



**Growing government, public and business concern over the improper management of natural resources**



**Extractive Industries (EI) are often targets of criticism as negative contributors to a nation's development**



**Negative perception and publicity often outweighs positive examples, i.e. where some EI businesses implement social and environmental best practice**

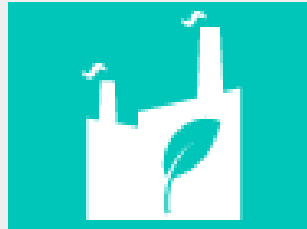


The  
**CHALLENGES**

# THE CHALLENGES




**Growing government, public and business concern over the better and sustainable management of natural resources**



**Extractive Industries (EI) is still the main driver to development and contributors to a nation's development**



**Inadequate understanding that lead to negative publicity often outweighs positive examples, i.e. where some EI businesses implement social & environ'l best practice**



A Solution: **A Focus Point  
to Profile, Share, Adapt,  
Best Practice**

## A Solution: A Focus Point to Profile, Share, Adapt, Best Practice

### **A RESOURCE CENTRE**

for EI social and environmental best practice information: papers, books, guides, policy development, case-studies.

### **A NETWORK HUB**

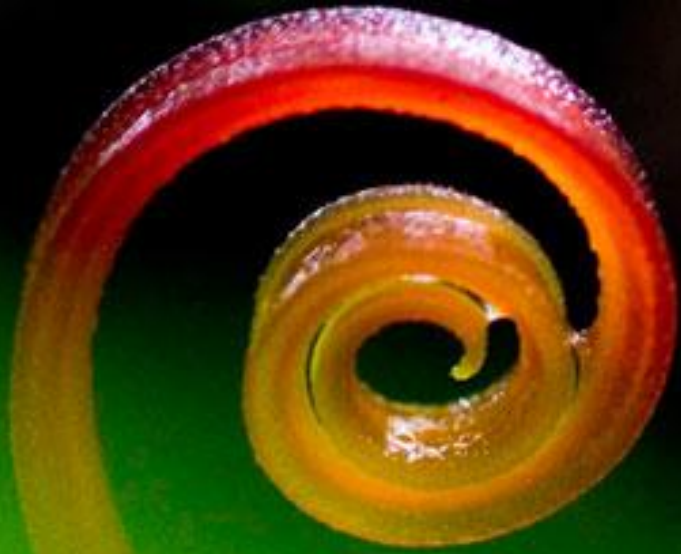
to ensure that all stakeholders have access to up-to-date information about the EI sector, social and environmental impacts, and best practice standards

### **A FORUM**

where business, government and civil society can engage to better learn and share EI best practice for social benefit and issues related to **EI sector resilience to rapid change and managing the expected change by public**

### **A COORDINATION CENTRE**

where knowledge and work around EI best-practice is pooled to ensure a consistent and efficient approach



Institutional  
**PROPOSAL**



# Institutional Proposal

**PREPAREDNESS PHASE:**  
a regional UNDP initiative to assess the need, suitability, and stakeholder acceptance of a regional EI Centre for Excellence

**PILOTING PHASE:**  
establishment of an independent regional EI Centre for Excellence in partnership with UNDP: agreed institutional working criteria

**FULL IMPLEMENTATION PHASE:**  
EI Centre for Excellence is implemented covering its scope of operations and fulfilling its mandate to represent all stakeholders (business, government, civil society)



UNDP Indonesia  
and Medco  
**As Initiators**

# UNDP Indonesia and Medco As Initiators

1

Conduct a **feasibility study**, including a regional **dialogue with key stakeholders**, on the establishment of a regional EI Centre for Excellence

---

2

Hold a **regional forum** for all key stakeholders to form and establish a regional EI Excellence Centre

---

3

**Establish** an independent EI Centre for Excellence with agreed institutional arrangement and rules

---

4

Conduct **regular monitoring and evaluation** to track objectives accomplishments, relevance of existing structures and rules of game, and the relevance of the existing EI Centre for Excellence for its key stakeholders

---

# TIME LINE-INITIAL FEASIBILITY STUDY

	<b>Activity</b>	<b>Time</b>
1	Stakeholder engagement in Indonesia and Asia Pacific Countries	Oct-March 2015
2	Initial institutional and actor interests mapping	Oct-March 2015
3.	Initial activities to promote the idea of EI Centre for Excellence	Oct-April 2015

# Thanks!

For further info, you may reach  
Dr Abdul Wahib Situmorang  
[abdul.situmorang@undp.org](mailto:abdul.situmorang@undp.org)